

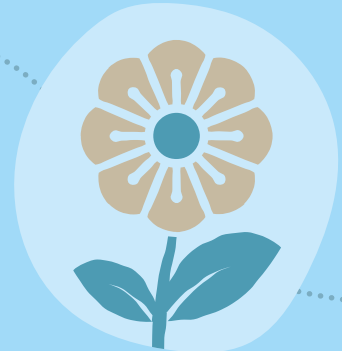
# EXPLORE

THE  
UNIVERSITY OF MELBOURNE  
BURNLEY CAMPUS



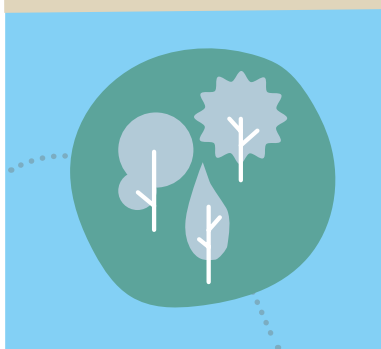
SECRETS

STORIES



DISCOVER

MELBOURNE'S SECRET HERITAGE-LISTED  
BOTANICAL WONDERLAND



# WELCOME!

WELCOME TO THE UNIVERSITY OF MELBOURNE'S BURNLEY CAMPUS, A HERITAGE-LISTED BOTANICAL WONDERLAND, KNOWN FOR ITS CENTURY-OLD GARDENS, AND LEADERSHIP IN TEACHING AND RESEARCH IN ENVIRONMENTAL AND ORNAMENTAL HORTICULTURE.

THE GARDENS ARE A PEACEFUL OASIS ON THE BANKS OF THE YARRA IN THE HEART OF MELBOURNE'S INNER EASTERN SUBURBS.

THE NINE-HECTARES ON WURUNDJERI LAND ARE HOME TO MANY NATIVE AUSTRALIAN AND EXOTIC PLANTS AND ARE OPEN FOR THE PUBLIC TO EXPLORE AND ENJOY.



## GETTING AROUND



### EXPLORE

Download the **Burnley Gardens Walk** app, a self-guided audio tour through the gardens – it's free from the App Store or Google Play.



### GETTING TO BURNLEY

Burnley is located east of Melbourne CBD, approximately 5km from the city centre.

#### BICYCLE

The Capital City Trail runs along the Yarra River next to campus, and bike parking is available behind the Student Amenities Building.



#### TRAM

Take the route 70 tram from Flinders Street to stop number 18 on Swan Street.



#### TRAIN

Nearest stations are Burnley (and then tram or walk along Swan Street) or Hawthorn on the Alamein, Belgrave and Lilydale lines.



#### CAR

Entry from Yarra Boulevard or Swan Street. Parking is available on Yarra Boulevard every day and additional parking is available off F R Smith Drive on weekends.

### FACILITIES

4

Bring a picnic, use our free BBQ facilities, and dine at the beautiful Sugar Gum outdoor table. Please take your rubbish home with you! Alternatively, cafes are open weekdays in the nearby Botanicca business park.

23

Toilet facilities are located in Student Amenities Building during University hours. After hours, toilets are available over Swan Street bridge in the Wallan Road Reserve car park.

For event and garden hire, contact [burnley-reception@unimelb.edu.au](mailto:burnley-reception@unimelb.edu.au)



### ACCESS

The main paths are wheelchair friendly. Minor garden paths may be difficult for those in wheelchairs to access without assistance.



# CAMPUS INFORMATION

## BURNLEY GARDENS

The Burnley Gardens were established by the Horticultural Society of Victoria in 1861. The aim was to introduce new plants to the colonies, and promote botanical and horticultural science. Land was granted to the society on the basis that a part of the gardens remain open to the public – and this continues today. The University now manages the gardens which are principally used by the School of Ecosystem and Forest Sciences. The School also has a campus at Creswick.



## PARKVILLE CAMPUS



The University of Melbourne is an internationally recognised research-intensive university with a tradition of excellence in teaching and learning, research and research training, and community engagement. The Parkville campus is located just north of the CBD. You're welcome to visit and explore our inspiring campus.

## BURNLEY CAMPUS



Burnley is home to modern urban horticulture research. Researchers at our Burnley campus investigate how we use plants in the urban environment, how we better design and manage the vegetation in cities, and understand what services the vegetation provides. Burnley is also home to globally recognised research groups in ecohydrology and forest science.

## CRESWICK CAMPUS



Situated in the heart of the central Victorian goldfields, the Creswick campus is Australia's only dedicated forest ecosystem science campus. With over 100 years history in education, the campus has a significant collection of trees in its arboretum as well as a 610 hectare demonstration forest nearby.

## SOUTHBANK CAMPUS



Situated in the heart of Melbourne's arts district at Southbank is the University's Victorian College of the Arts.

Visit the Margaret Lawrence Gallery to see work by some of Melbourne's leading emerging artists, or visit [www.vca-mcm.unimelb.edu.au/events](http://www.vca-mcm.unimelb.edu.au/events) to see what's on show at the Grant Street Theatre or Federation Hall.

## BY THE NUMBERS

OVER 600  
TREES  
FROM ALMOST 260  
DIFFERENT SPECIES



MORE THAN  
3400 SHRUBS, VINES  
AND PERENNIALS  
FROM OVER 1200 SPECIES

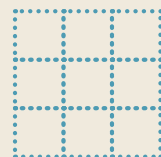
6 TREES &  
3 BUILDINGS ON  
THE VICTORIAN  
HERITAGE REGISTER



1997

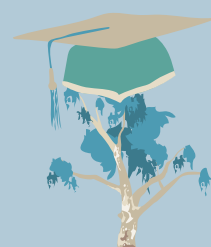
OWNERSHIP  
OF GARDENS  
WAS PASSED  
OVER TO THE  
UNIVERSITY

9 HECTARES  
OF GARDENS



1899

WOMEN ALLOWED  
TO STUDY CERTIFICATE  
OF HORTICULTURE



1891  
HORTICULTURAL  
EDUCATION  
BEGAN

3 TREES  
ON THE NATIONAL  
TREES REGISTER



# IT HAPPENED HERE!

(SECRETS+STORIES FROM AROUND THE CAMPUS)

## BLAST FROM THE PAST

FOR APPROXIMATELY 400 YEARS THE OLDEST TREE IN THE GARDENS HAS STOOD ON THE COUNTRY OF THE WURUNDJERI PEOPLE, TRADITIONAL CUSTODIANS OF THIS LAND. MANY OF THE OLDEST TREES IN THE GARDEN PRE-DATE EUROPEAN COLONISATION.

## FAMOUS FRUIT



Back in the 1800s, wax models of apples grown in Burnley Gardens and nearby orchards were made in order to showcase the many varieties able to be grown in the colonies. These wax fruits travelled overseas and were used to tout the fantastic growing abilities of the Victorian climate! These incredibly realistic models are now kept by Museum Victoria.

## AMONG THE ANIMALS

In the early 1900s, agriculture was taught alongside horticulture and there was a dairy herd, bull, horses and poultry on campus. Students learnt how to drive draught horses and plough fields as part of their studies.

## FRUIT BOWL OF VICTORIA

The gardens were the birthplace of the fruit industry in Victoria and had 2235 varieties of fruits and vines by 1888.



## 18 A LIVING ROOF

THERE ARE THREE LIVING ROOFS IN BURNLEY GARDENS, THE LARGEST OF WHICH IS THE DEMONSTRATION GREEN ROOF ON THE SOUTHERN END OF THE MAIN ADMINISTRATION BUILDING. THE ROOF IS MADE UP OF OVER 200 TYPES OF PLANTS, NUMBERING OVER 3000 INDIVIDUAL PLANTS IN TOTAL! 95 PER CENT OF THE PLANTS WERE GROWN ONSITE IN THE NURSERY.

## 4 SUGAR GUM TABLE

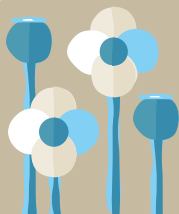
The grand Sugar Gum Table was donated by the Friends of Burnley Gardens and is made from the timber of a heritage-listed Sugar Gum. The tree had to be removed from the gardens in 2008 due to persistent limb drop and its wood was returned five years later in the form of the table.

## FLOOD OF 1934

The flooding of the Yarra River in 1934 took over the campus for a week. Trees were uprooted leaving big holes behind – even furniture, a cart and a piano were seen floating down the river!

## WARTIME GROWING

During the Second World War, the Gardens ran a vegetable growing campaign, and even temporarily produced opium poppies when normal morphine supplies were cut.



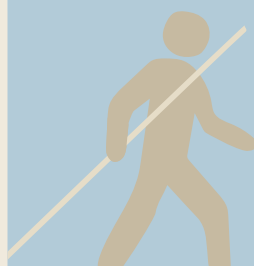
## 9 ORCHARD GATES



The former orchard (field station) gates were opened in 2013 as part of the 150th anniversary of the official gardens opening. The ornamental gates were custom made for the gardens and were a gift of the Friends of Burnley Gardens.

## 20 YARRA RIVER PUNT

Before the Swan Street Bridge was constructed, a punt was the only way to cross the river at this spot. The two heritage-listed Elm trees mark the access point of the former crossing.







CENTRAL/BOTANICA DRIVE

TO RICHMOND AND THE CITY

EASTERN DRIVE

SWAN STREET

YARRA BOULEVARD

YARRA RIVER

BOULEVARD DRIVE

YARRA BOULEVARD

F.R. SMITH DRIVE

CENTRAL LAWN

OAK LAWN

P  
(WEEKENDS ONLY)

P

P

P

23

16

17

15

18

14

13

12

11

10

9

8

7

6

5

4

3

2

1

20

19

21

22

# KEY

Numbers 1 – 22 correspond to the stops on the Burnley Gardens Walk app.

- |   |  |
|---|--|
| 1 The Summer House  | 13 Rose Garden   |
| 2 Luffmann Ponds  | 14 Rainforest Garden   |
| 3 Grey Gardens  | 15 Native (Australian) Garden                                      |
| 4 Sugar Gum Setting & Herb Garden                                   | 16 Iconic Tree – River Red Gum ( <i>Eucalyptus camaldulensis</i> ) |
| 5 Sunken Garden & Wisteria Walk                                     | 17 Native Grassland  |
| 6 Iconic Tree – Queensland Kauri ( <i>Agathis robusta</i> )         | 18 Main Administration Building                                    |
| 7 Shady Walk  | 19 Ellis Stones Garden   |
| 8 Iconic Tree – Californian Redwood ( <i>Sequoia sempervirens</i> ) | 20 Iconic Tree – Elms  |
| 9 The Orchard / Field Station Gates                                 | 21 Lagoon Paddock  |
| 10 Azalea Lawn  | 22 Swan Street Terraces  |
| 11 Iconic Tree – English Oak ( <i>Quercus robur</i> )               | 23 Student Amenities Building                                      |
| 12 Perennial Border   |  |



## FIND THE FLAMINGOES

SEE IF YOU CAN FIND ALL SIX OF OUR CAMPUS FLAMINGOES ON THE MAP!

## CONTACT DETAILS

### VISIT US

500 YARRA BOULEVARD  
RICHMOND 3121  
VICTORIA, AUSTRALIA

### CONTACT

BURNLEY CAMPUS: +61 3 9035 6800  
BURNLEY-RECEPTION@UNIMELB.EDU.AU  
13 MELB (13 6352)

WWW.UNIMELB.EDU.AU

-  facebook.com/melbuni
-  twitter.com/unimelb
-  instagram.com/unimelb
-  youtube.com/unimelb

### FRIENDS OF BURNLEY GARDENS

THE FRIENDS OF BURNLEY GARDENS IS A NOT-FOR-PROFIT COMMUNITY GROUP WHICH RAISES FUNDS TO SUPPORT THE BURNLEY GARDENS.

WWW.FOBG.ORG.AU  
+61 03 9035 6815  
FRIENDS.BURNLEY@GMAIL.COM

